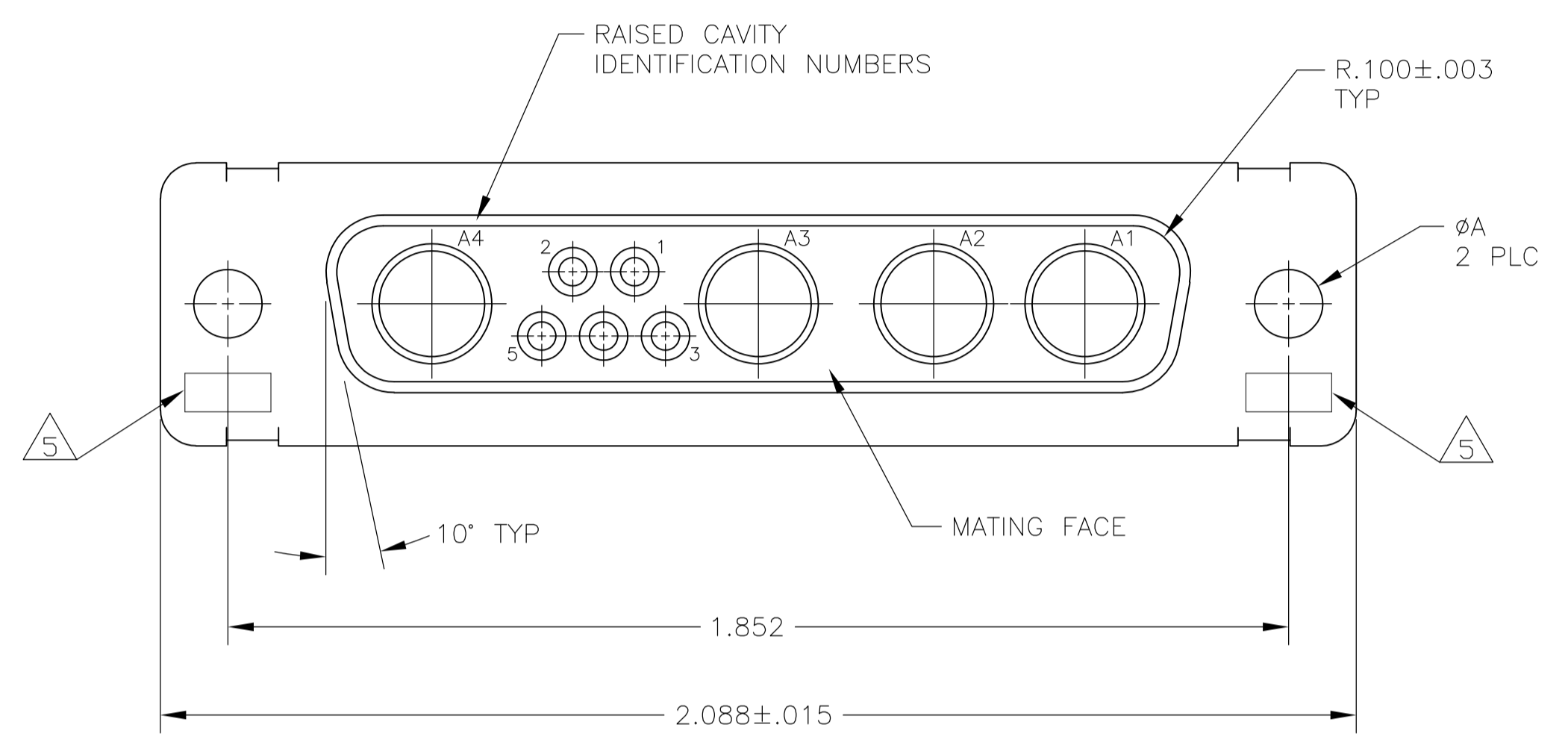
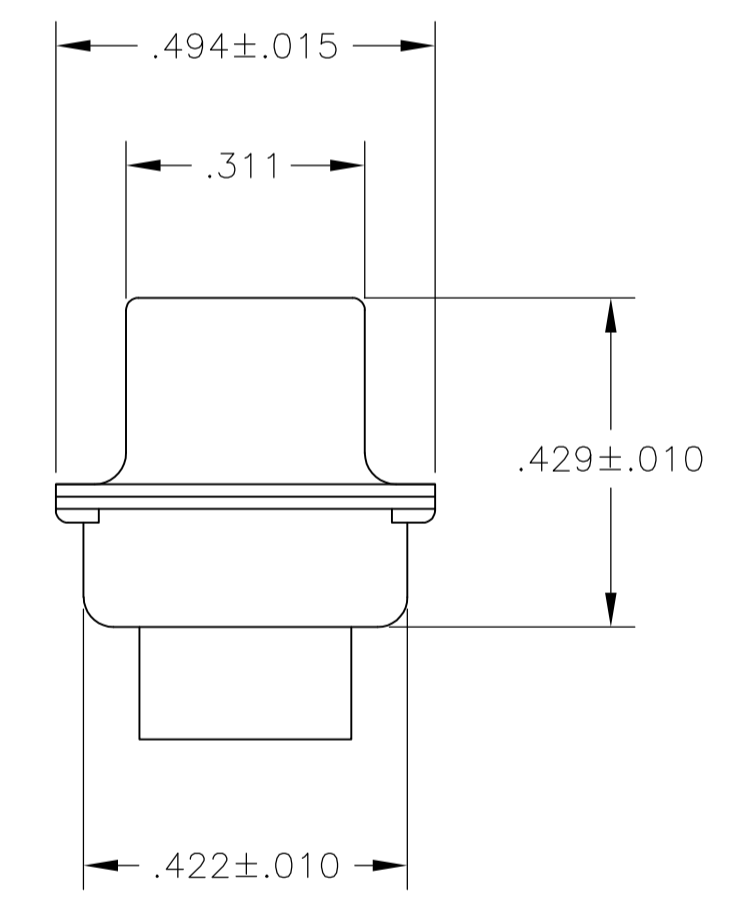
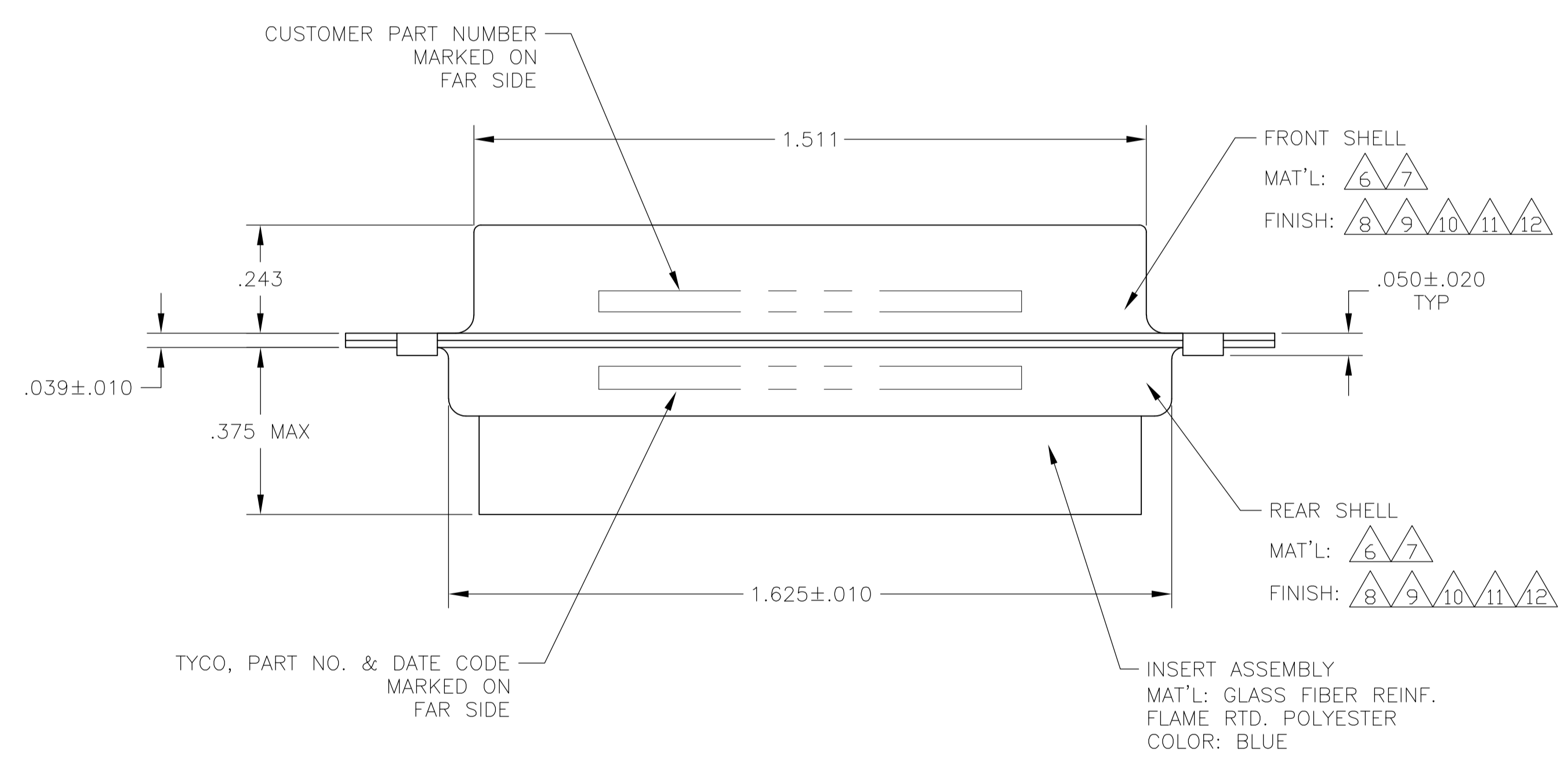


LOC	DIST	REVISIONS				
DF	DO	REV	PER	DATE	BY	CHK
		L	REV PER ECO 05-014955	23JAN06	BL	CT
		M	REV PER ECO 08-012299	20JUN08	PK	RL

- THIS RECEPTACLE WILL MATE WITH ANY 9C4, SIZE 3 PLUG IN AMPLIMITE SERIES.
- MAXIMUM WIRE INSULATION TO BE USED WITH THIS RECEPTACLE IS $\phi.072$.
- THIS CONNECTOR ACCEPTS (4) POWER 8, OR COAX SOCKET CONTACTS IN POSITIONS A1 THRU A4, PURCHASED SEPARATELY. WILL NOT ACCEPT WILL NOT ACCEPT RIGHT ANGLE COAX.
- THIS CONNECTOR ACCEPTS SIZE 20 SOCKET SIGNAL CONTACTS IN POSITIONS 1 THRU 5, PURCHASED SEPARATELY.



- $\Delta 5$ UL/CSA DESIGNATION STAMPED IN THIS AREA, OPTIONAL.
- $\Delta 6$ STEEL PER ASTM-A-109.
- $\Delta 7$ BRASS PER MIL-C-50 AND ASTM-B-36 UNS NO. C26000.
- $\Delta 8$ CADMIUM PLATED PER QQ-P-416, TYPE II, CLASS 2 OVER COPPER PER MIL-C-14550, CLASS IV.
- $\Delta 9$ GOLD PLATED PER MIL-G-45204 TYPE II, GRADE C, CLASS 1 OVER COPPER PER MIL-C-14550, CLASS IV.
- $\Delta 10$ FINISH: TIN PER ASTM-B-545 .000200 MIN THK OVER COPPER PER AMS2418 .000100-.000200 THK OR TIN-LEAD 93/7 .000200 MIN THK OVER COPPER PER AMS2418 .000100-.000200 THK.
- $\Delta 11$ FINISH: TIN PER ASTM-B-545 .000200 MIN THK OVER COPPER PER AMS2418 .000100-.000200 THK.
- $\Delta 12$ FINISH: ZINC PLATE PER ASTM-B-633 .000200-.000400 THK WITH SUPPLEMENTARY CHROMATE (Cr3+).



$\Delta 6/\Delta 11$.120	-	5-212502-5
$\Delta 6/\Delta 12$.120	-	5-212502-1
$\Delta 7/\Delta 9$.120	B010942-0018	212502-6
$\Delta 6/\Delta 10$.120	-	212502-5
$\Delta 6/\Delta 10$.154	-	212502-4
$\Delta 7/\Delta 9$.154	311P405-11S-B-15	212502-3
$\Delta 7/\Delta 9$.120	311P405-11S-B-12	212502-2
$\Delta 6/\Delta 8$.120	-	212502-1
REMARKS	ϕA	CUSTOMER P/N	PART NO.

THIS DRAWING IS A CONTROLLED DOCUMENT. DWN: C.C.THOMAS 27-JAN-88
 CHK: A.EMADI 29-JAN-88
 APD: A.EMADI 29-JAN-88

TOLERANCES UNLESS OTHERWISE SPECIFIED:
 DIMENSIONS: INCHES
 0 PLC ± -
 1 PLC ± -
 2 PLC ± -
 3 PLC ± .005(0.13)
 4 PLC ± -
 ANGLES ± $0'30''$

MATERIAL: - FINISH: -

PRODUCT SPEC: -
 APPLICATION SPEC: -
 WEIGHT: -

RECEPTACLE ASSEMBLY
 AMPLIMITE 9C4
 SIZE 3, SERIES 109, COAX MIX

SIZE: A1 CAGE CODE: 00779 DRAWING NO: 212502
 RESTRICTED TO: -

CUSTOMER DRAWING SCALE: 4:1 SHEET: 1 OF 1 REV: M